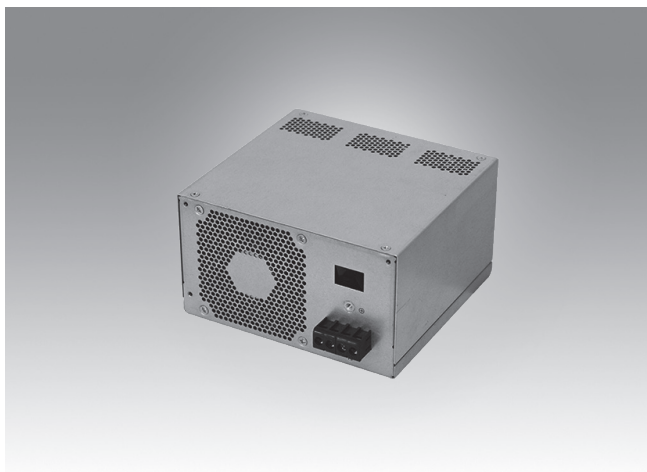


96PS-D500WPS2

ATX Power Supply



Features

- Supports DC 110V/220V power source application
- High efficiency 80PLUS Bronze label
- Enhanced components with Japanese capacitors
- Wide-range working temperature, full load under 50°C
- 3-year worldwide warranty
- Certified and compatibility tested with systems

Specifications

Input	Input Voltage	110 ~ 220 V _{DC}							
	Input Frequency	N/A							
	Input Current	< 7A @ 115 V _{DC} , < 3.5A @ 230 V _{DC}							
	Efficiency (typical)	85%							
	80 Plus Certified	Bronze							
	Max. Inrush Current	80A @ 110 V _{DC} in, 160A @ 230 V _{DC} in without damage							
	Hold-up Time	16 mSec.							
	Leakage Current	< 2.5 mA-rms @ 220 V _{DC}							
Output	Output Voltage	+3.3V	+5V	+12V1	+12V2	+12V3	-5V	-12V	+5VSB
	Output Current (Max.)	20	20	16	16	16	0.3	0.5	3
	Output Current (Min.)	0	0	0.5	0.5	0.5	0	0	0
	Max. Power	103 watts							
	Total Power	500 Watts							
	Accuracy (%)	±5%	±5%	±5%	±5%	±5%	±10%	±10%	±5%
	Max. Ripple & Noise (mVp-p)	50 mV	50 mV	120 mV	120 mV	120 mV	100 mV	120 mV	50 mV
	Load Regulation	±5%	±5%	±5%	±5%	±5%	±10%	±10%	±5%
Protection	OVP (Over Voltage Protection)	3.7 ~ 4.3V	5.7 ~ 7.0V	13.4 ~ 15.6V	13.4 ~ 15.6V	13.4 ~ 15.6V	N/A	N/A	N/A
	OCP (Over Current Protection)	24 ~ 36A	24 ~ 36A	18 ~ 24A	18 ~ 24A	18 ~ 24A	N/A	N/A	N/A
	SCP (Short Circuit Protection)	< 0.1 ohm. (Shut Down and Latch Off without Damage)							
	OTP (Over Temperature Protection)	Shut Down and Latch Off without Damage							
Environment	Operating Temperature	0 ~ 50°C							
	Operating Humidity	85% RH, Non-condensing							
	Storage Temperature	-20 ~ 80°C							
	Storage Humidity	95% RH, Non-condensing							
	Shock Test (Non-Operating)	40G, 9ms half-sine wave pulse in both directions on three mutually perpendicular axes.							
	Vibration Test (Non-Operating) bration	0.01g ² /Hz at 5 Hz sloping to 0.02g ² /Hz at 20 Hz, and maintaining 0.02g ² /Hz from 20 Hz to 500 Hz. The area under the PSD curve is 3.13gRMS (Test duration: 20 minutes per axis for all three axes.)							
Insulation	Dielectric Strength	1,500 V _{AC}							
	Insulation Resistance	20 MΩ							
EMC	CE	EN55032 (CISPR32), EN61000-3-2,EN61000-3-3							
Safety	CB	IEC 62368-1:2014 (Second Edition)							
Form Factor		ATX PS2							
Dimension (W x H x D)		150 x 86 x 140 mm / 5.9 x 3.4 x 5.5 in.							
MTBF (hours)		100k							
Weight		1.8kg							
Warranty		3 Years							

Dimensions

Unit: mm [inch]

