

GETAC S410 FULLY RUGGED LAPTOP ACCESSORY SPEC BROCHURE



GETAC TECHNOLOGY CORPORATION

5F, Building A, No. 209, Section 1, Nangang Rd., Nangang Dist., Taipei City,
115018, Taiwan, R.O.C. Tel : +886 2 2785 7888 globalmarketing@getac.com |
www.getac.com

BRILLIANT ALL DAY

CARRY BAG

FEATURES & BENEFITS

Constructed of durable Nylon/air mesh fabric and featuring an adjustable padded shoulder strap, this compact carry bag provides sturdy protection for your device while giving maximum comfort. The functional pockets inside offer the optimal solution to transport the laptop and needed accessories together in one case, delivering extra convenience and go-anywhere productivity to mobile professionals.

Product Information

Dimensions : L 405 x W 330 x D 100mm

Weight : 1.335kg

Main Material : Nylon, air mesh fabric

SKU ID

GMBCX7



MULTIMEDIA BAY BATTERY

FEATURES & BENEFITS

The Getac S410 Removable Media Bay Battery Pack is designed to fit perfectly in the media bay and provide additional battery life for workers who are in the field for long periods of time. With removable features, users can easily change the media bay battery by pulling it out from the media bay.

Product Information

Battery Type : Lithium-ion, 6 cells, 46.6WH
Nominal Voltage : 11.1V
Capacity : 4200mAh
Battery Pack Weight : 300g

SKU ID

GBS6X1



MAIN BATTERY & 2ND BATTERY

FEATURES & BENEFITS

The S410 Spare Main Battery is designed to provide main power source for device when AC adapter is not connected/charged.

Product Information

Battery Type : Lithium-ion 6 cells, 74.5WH
Nominal Voltage : 10.8V
Capacity : 6900mAh
Battery Pack Weight : 330g

SKU ID

GBM6X6



MULTIMEDIA BAY 2ND STORAGE WITH CANISTER

FEATURES & BENEFITS

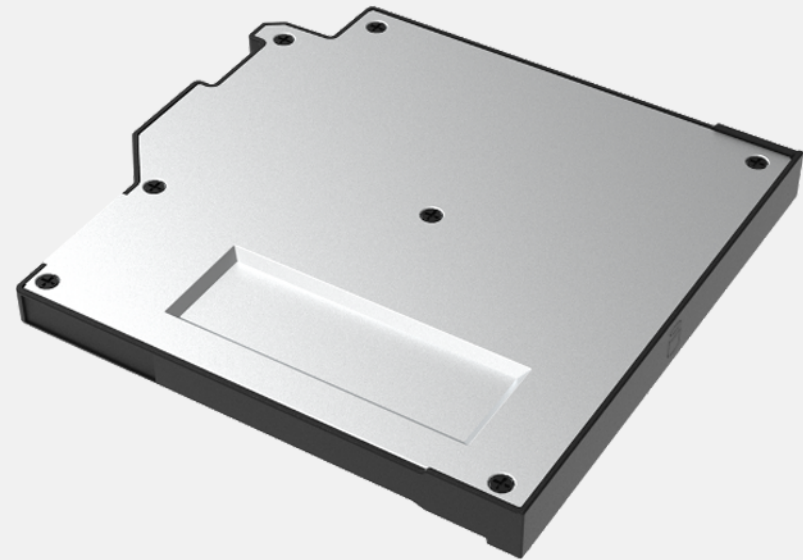
Getac S410 second storage with canister is designed to provide you the ease of installation and allow you to remove your confidential data when your device is sent for service.

Product Information

Capacity : SATA 256GB/512GB/1TB
Dimension : 140 x 134 x 9mm
Weight : 86g

SKU ID

GSR2X5 (256GB SATA SSD)
GSR3X5 (512GB SATA SSD)
GSR0X4 (1TB SATA SSD)



EXTERNAL DUAL BAY BATTERY CHARGER

FEATURES & BENEFITS

This external dual-bay battery charger is designed to charge up to 2 batteries at the same time. It provides you the benefit of charging and storing two batteries together when there is limited space and power sockets.

Product Information

AC Input : 100V~240V

DC Output : 13.05V, 2.4A Max.

Number of charge bay : 2 Bay

Dimensions : L 160 x W 180 x H 72.5mm

Weight : 1.2kg

SKU ID

Main Battery + Multimedia Bay Battery	Two Main Batteries
GCMCEK (EU Power Cord)	GCMCEJ (EU Power Cord)
GCMCUK (US Power Cord)	GCMCUJ (US Power Cord)
GCMCKK (UK Power Cord)	GCMCKJ (UK Power Cord)
GCMCAK (AU Power Cord)	GCMCAJ (AU Power Cord)
GCMCCK (CHN Power Cord)	GCMCCJ (CHN Power Cord)
GCMCTK (TW Power Cord)	GCMCTJ (TW Power Cord)
GCMCIK (IN Power Cord)	GCMCIJ (IN Power Cord)



Main Battery + Multimedia Bay Battery



Two Main Batteries

MULTI-BAY BATTERY CHARGER EIGHT BAY

FEATURES & BENEFITS

The 8-bay multi-battery charger is designed to charge multiple battery packs simultaneously and provide users an efficient charging solution.

Product Information

AC Input : 100V~240V AC, 4.2A 50~60Hz
DC Output : 19.5V, 16.9A * w/ 330W AC Adapter
Number of charge bays : 8 bays
Dimensions : L 465 x W 245 x H 95.3~111.3mm
Weight : 4.7kg, not including battery packs

SKU ID

Main Batteries Only
GCECEM (EU Power Cord)
GCECUM (US Power Cord)
GCECKM (UK Power Cord)
GCECAM (AU Power Cord)
GCECCM (CHN Power Cord)



90W AC ADAPTER

FEATURES & BENEFITS

This adapter is designed to power the device and charge its internal battery from an AC power source. A country-specific power cord is included with the adapter to fit the local power outlet in your destination country.

Product Information

Input : 100V-240V
Output : 19V, 4.74 A, 90W
Dimensions : L 129 x W 53 x H 30.5mm
Weight : 368g
Input cable length : 1830mm
Output cable length : 1800mm

SKU ID

GAA9E5 (EU Power Cord)
GAA9U5 (US Power Cord)
GAA9K5 (UK Power Cord)
GAA9A5 (AU Power Cord)
GAA9C5 (CHN Power Cord)
GAA9T5 (TW Power Cord)



(for use in non-hazardous areas only)

100W TYPE-C AC ADAPTER

FEATURES & BENEFITS

The 100W Type-C AC adapter as an additional charging solution to charge Getac rugged tablets and laptops with inherent USB type-C ports as well as the power delivery functionality. The Type-C adapter features a reversible connector type that reduces connector damages due to misuse.

Product Information

Input : 100V-240V
Output : 20V, 5A, 100W
Dimensions : L 140 x W 65 x H 25mm
Weight : 326g Input cable
length : 1830mm
Output cable length : 1500mm

SKU ID

GAT1E1 (EU Power Cord)
GAT1U1 (US Power Cord)
GAT1K1 (UK Power Cord)
GAT1A1 (AU Power Cord)
GAT1C1 (CHN Power Cord)
GAT1T1 (TW Power Cord)



120W AC ADAPTER WITH POWER CORD

FEATURES & BENEFITS

Specifically designed for use with the office docking station and performance SKU, this 120W AC adapter provides efficient delivery to power your devices.

Product Information

Input : 100V-240V

Output : 19V, 6.32A Max.

Dimensions : L 131.5 x W 69 x H 25.6mm

Weight : 412g

Input cable length : 1830mm

Output cable length : 1800mm

SKU ID

GAA3E2 (EU Power Cord)

GAA3U2 (US Power Cord)

GAA3K2 (UK Power Cord)

GAA3A2 (AU Power Cord)

GAA3C2 (CHN Power Cord)

GAA3T2 (TW Power Cord)

GAA3R2 (KR Power Cord)

GAA3I2 (IN Power Cord)

GAA3G2 (AG Power Cord)



120W DC-DC VEHICLE ADAPTER

FEATURES & BENEFITS

The 120W vehicle adapter comes with a choice of two types of connections: a bare wire with individual wire ends already stripped, and a cigarette lighter plug for easy connection to the cigarette lighter socket in the vehicle interior, providing a convenient way to charge and power your tablet while you are on the road.

Product Information

Input Voltage : 11VDC~ 32VDC

Output Voltage : 19VDC

Output current : 6.32A Max.

Case Dimensions : L 131.5 x W 65.6 x H 30mm

Weight : 362g

Input cable length : 1900mm

Output cable length : 1000mm

SKU ID

GAD2X4 (Cigarette Lighter Plug Version)

GAD2X8 (Bare Wire Version)



Cigarette Lighter Plug Version



Bare Wire Version

CAPACITIVE STYLUS PEN & TETHER

FEATURES & BENEFITS

This capacitive hard tip stylus is lightweight and easy to control, allowing smooth and comfortable interaction with the touch screen without worrying about scratching the screen or leaving fingerprints on it. The stylus comes with a detachable tether to keep the stylus attached to the device, so it doesn't get lost or misplaced.

Product Information

Stylus Dimensions : 111mm ; Ø9mm
Tip size : 3.8mm ; Ø3.5mm
Tether Length : 304mm

SKU ID

GMPSXE



PROTECTION FILM

FEATURES & BENEFITS

This screen protection film is cut precisely to fit the S410 device and is easy to install and remove without leaving a sticky residue. With anti-glare coating, it not only protects the screen from the rigors of daily use and helps to diffuse light on the screen and reduces glare, providing effortless readability for displayed information under common ambient lighting conditions.

Product Information

Dimensions : L 309.4 x W 173.85 x H 0.15mm
Main Material : PET

SKU ID

GMPFXN



SPARE MAIN STORAGE

FEATURES & BENEFITS

Getac S410 Spare Main Storage with canister is designed to provide you the ease of installation and allow you to remove your confidential data when your device is sent for service.

Product Information

Capacity : PCIe NVMe 256GB/512GB/1TB
Dimension : 107 x 26 x 8mm
Weight : 90g

SKU ID

GSSEX4 (256GB PCIe NVMe SSD)
GSSFX4 (512GB PCIe NVMe SSD)
GSSGX4 (1TB PCIe NVMe SSD)



OFFICE DOCK WITH 120W AC ADAPTER

FEATURES & BENEFITS

For workers, who need to work from the office, the S410 office dock provides a variety of connections: VGA, USB, RS232 serial and LAN (RJ-45) which helps update data with central offices in real-time.

Product Information

DC in Jack x 1
Audio Output x 1
USB 3.0 x 1
USB 2.0 x 3
VGA x 1
HDMI x 1
LAN (RJ-45) x 1
RS232 serial x 1
Microphone x 1
* w/ 120W AC Adapter

SKU ID

GDODE4 (EU Power Cord)
GDODU4 (US Power Cord)
GDODK4 (UK Power Cord)
GDODA4 (AU Power Cord)
GDODC4 (CHN Power Cord)
GDODT4 (TW Power Cord)
GDODR4 (KR Power Cord)
GDODI4 (IN Power Cord)

