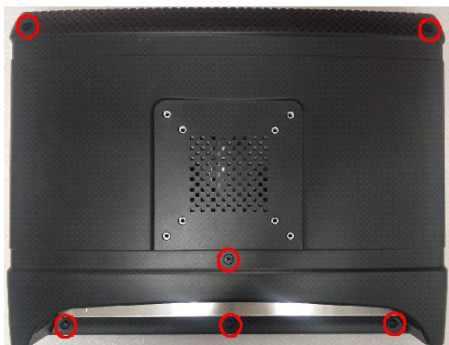
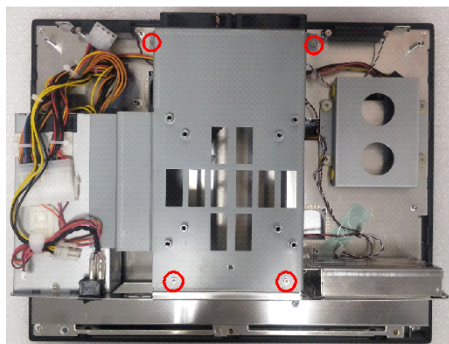


Motherboard Installation

1. Remove the 6 screws on the back cover.

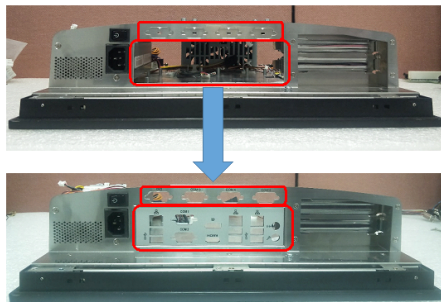


2. Remove the 4 screws on the reinforcing plate.



Motherboard Installation (Cont.)

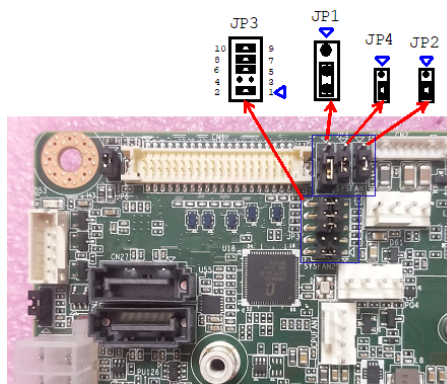
3. Install the I/O bracket for the motherboard and remove the shield over the DB9 port.



4. Adjust the jumper settings on the motherboard based on the configuration of the motherboard and the machine.

Note: The settings for the jumpers on the 15", 17", and 19" panels are as follows:

| PPC-6151C+PPC-MB-620 | Setting |
|----------------------|--------------------------------------|
| JP3 | JP(1-2) (5-6) (7-8) (9-10) closed |
| JP1 | JP(2-3) +3.3V |
| JP4 | JP(2-3) +3.3V |
| JP2 | JP(2-3) +3.3V |



For more information on this and other Advantech products, please visit our website at:

<http://www.advantech.com>

For technical support services, please visit our support website at:

<http://www.advantech.com/support>

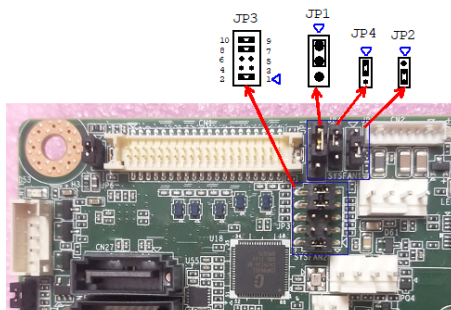
This manual is for PPC-61x1C+PPC-MB-620.

Part No. 2003C615A0
Printed in China

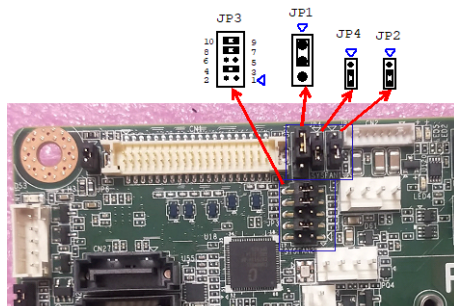
Edition 1
August 2023

Motherboard Installation (Cont.)

| PPC-6171C+PPC-MB-620 | Setting |
|----------------------|-----------------------------|
| JP3 | JP(1-2) (7-8) (9-10) closed |
| JP1 | JP(1-2) +5V |
| JP4 | JP(1-2) +5V |
| JP2 | JP(2-3) +V3.3 |

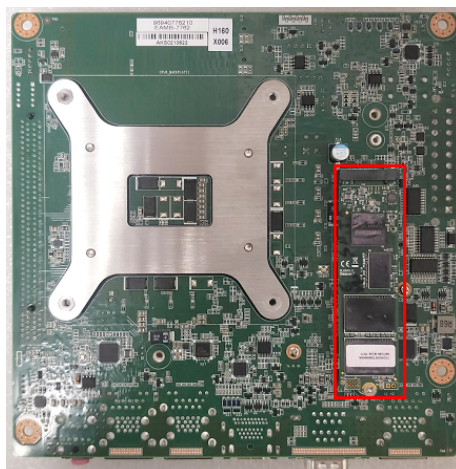


| PPC-6191C+PPC-MB-620 | Setting |
|----------------------|-----------------------------|
| JP3 | JP(3-4) (7-8) (9-10) closed |
| JP1 | JP(1-2) +5V |
| JP4 | JP(2-3) +3.3V |
| JP2 | JP(2-3) +3.3V |



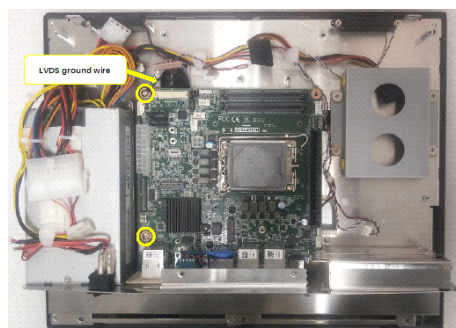
Motherboard Installation (Cont.)

- Install M.2 modules.

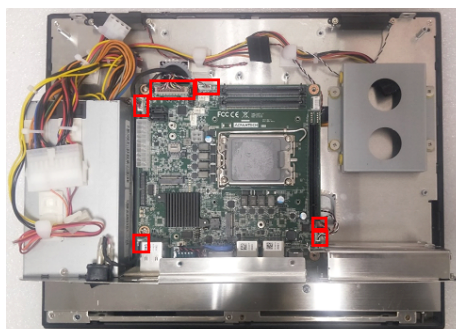


- Attach the motherboard with 2 screws onto the machine chassis.

Note: The ground wire for the LVDS should also be attached.

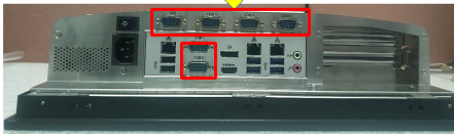
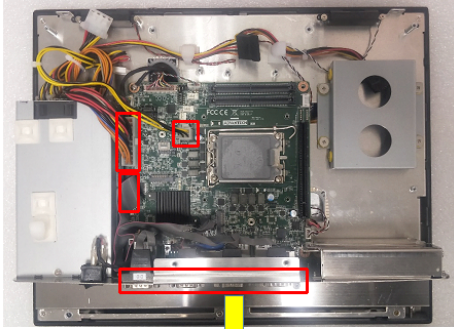


- Plug in the cable for the motherboard.

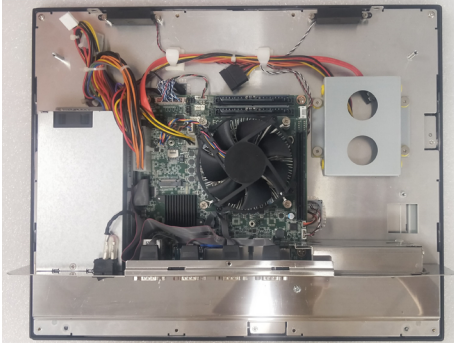


Motherboard Installation (Cont.)

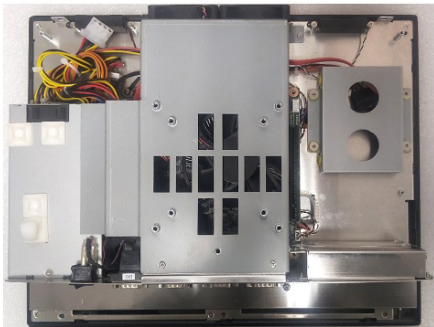
8. Plug in the power cable and the COM cable, and insert the hex screws for the I/O. Then take out the sticker from the accessory box and label the COM ports.



9. Install the memory and CPU, attach the CPU cooler and plug in the cable of the CPU fan, as well as the SATA cable.

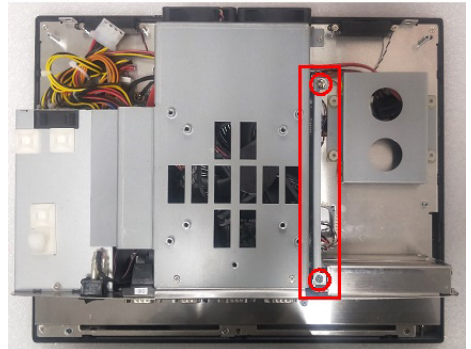


10. Attach the reinforcing plate.

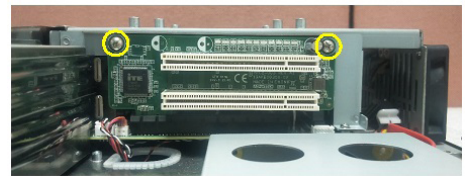


Motherboard Installation (Cont.)

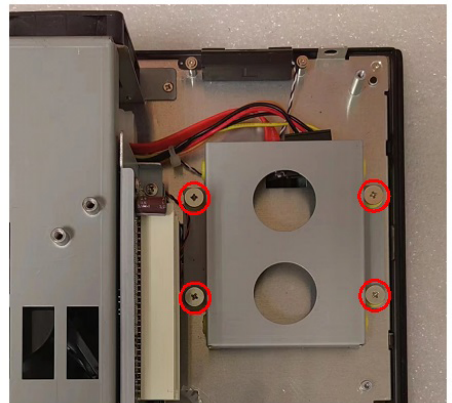
11. Attach the riser card bracket with 2 screws.



12. Insert the riser card and secure it with 2 screws.

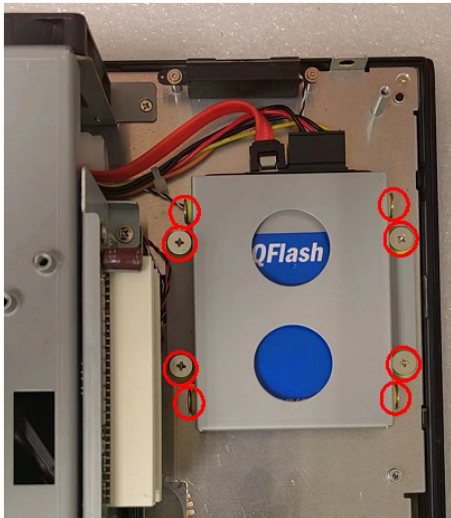


13. Install the SSD.
a) Remove 4 screws from the SSD module.



Motherboard Installation (Cont.)

b) Attach the SSD on the module and fix them together onto the machine. Then plug in the cable.

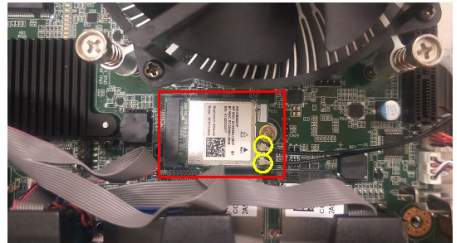


14. Assemble the back cover.

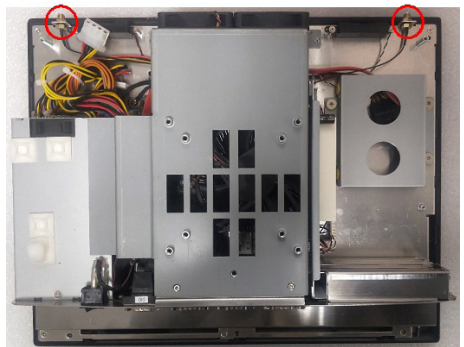


Wireless LAN Card Installation

1. Insert the wireless LAN card and plug in the antenna cable.



2. Install the antenna adapter to the bracket, and attach the reinforcing plate.



3. Assemble the back cover with screws and attach the receiving heads of the antenna.

