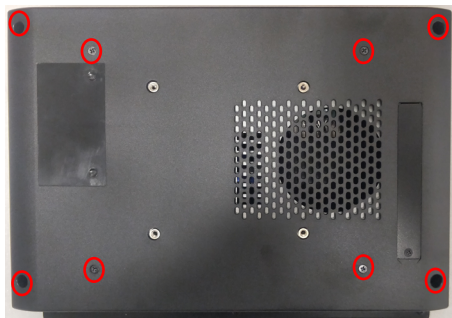
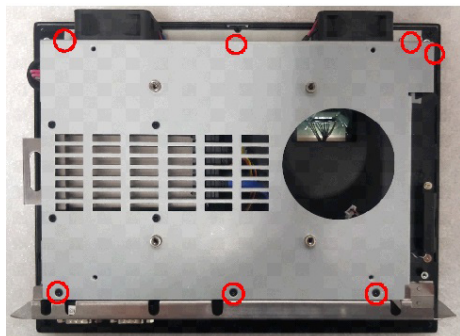


Motherboard Installation

1. Remove the 8 screws on the back cover.



2. Remove the 7 screws on the reinforcing plate.



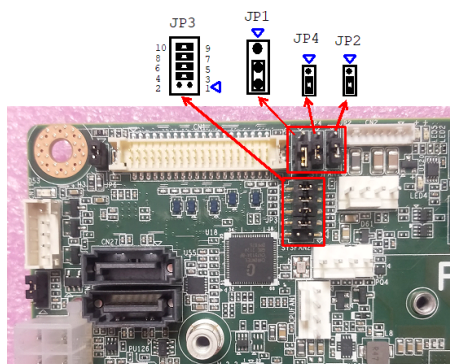
Motherboard Installation (Cont.)

3. Install the I/O bracket for the motherboard.



4. Adjust the jumper settings on the motherboard based on the configuration of the motherboard and the machine.

PPC-612+PPC-MB-620	Setting
JP3	JP(1-2)open,(3-4)(5-6)(7-8)(9-10)closed
JP1	JP(2-3)
JP2	JP(2-3)
JP4	JP(2-3)



For more information on this and other Advantech products, please visit our website at:

<http://www.advantech.com>

For technical support services, please visit our support website at:

<http://www.advantech.com/support>

This manual is for PPC-612 + PPC-MB-620.

Part No. 2004061230

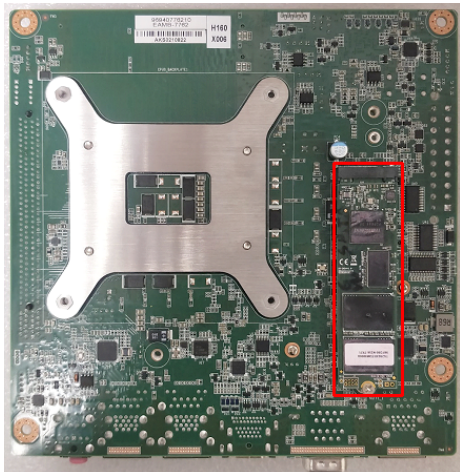
Printed in China

Edition 1

August 2023

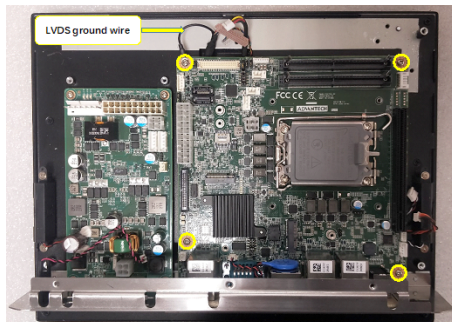
Motherboard Installation (Cont.)

5. Install M.2 modules.

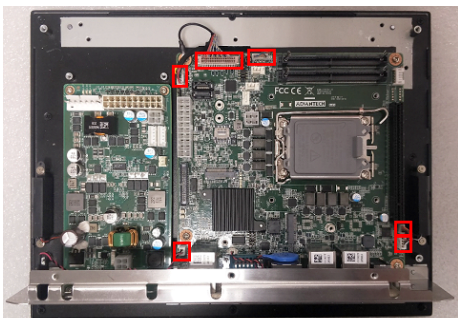


6. Attach the motherboard to the machine chassis with 4 screws.

Note: The ground wire for LVDS should also be attached.

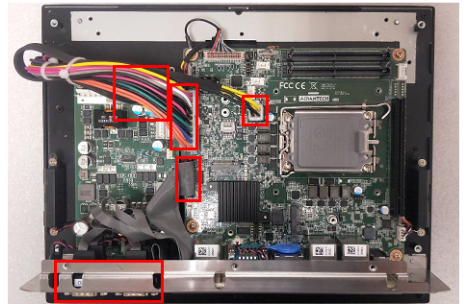


7. Plug the cable into the motherboard.

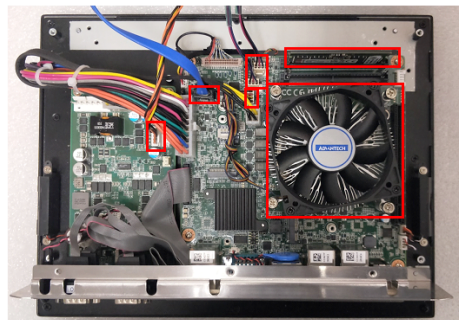


Motherboard Installation (Cont.)

8. Plug in the power cable and the COM cable, and attach the hex screws for the I/O. Then take out the sticker from the accessory box and label the COM ports.



9. Install the memory, attach the CPU fan, plug in the cables for the CPU fan, system fan, and the SATA cable.



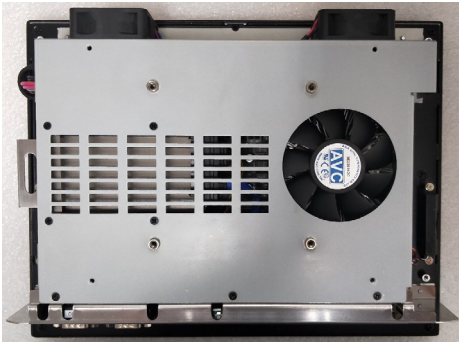
10. Attach the reinforcing plate.



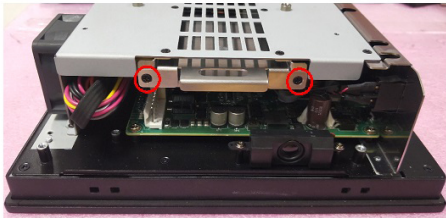
Motherboard Installation (Cont.)

11. Install the SSD module:

- Attach the reinforcing plate.



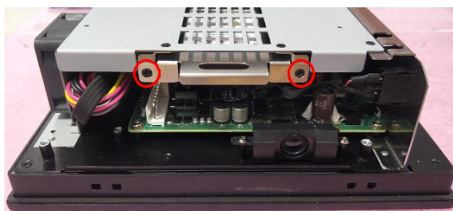
- Remove 2 screws from the SSD bracket.



- Attach the SSD to the bracket with 2 screws.

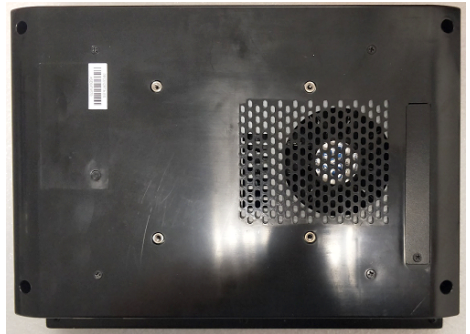


- Attach the SSD module to the reinforcing plate with 2 screws.



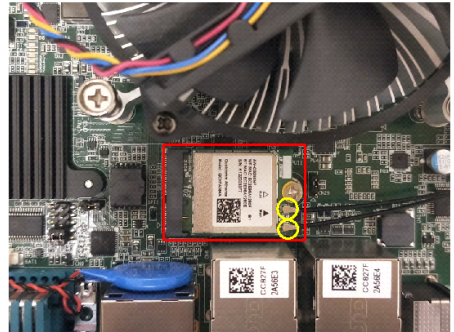
Motherboard Installation (Cont.)

12. Assemble the back cover.



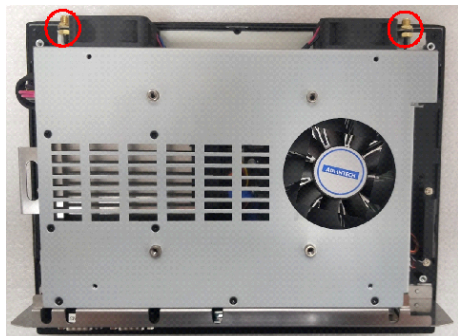
Wireless LAN Card Installation

- Insert the wireless LAN card and plug in the antenna cable.



Wireless LAN Card Installation (Cont.)

2. Install the antenna adapter to the bracket and attach the reinforcing plate.



Wireless LAN Card Installation (Cont.)

3. Assemble the back cover with screws and attach the receiving heads of the antenna.

