

# PCM-23C1CF

1 x CFast slot with cover protection

## Packing List

Before installation, please ensure that the following items have been included in your shipment:

- 1 x CFast I/O plate with 1 x iDoor bracket
- 1 x Startup manual
- 1 x Warranty card

If any of these items are missing or damaged, contact your distributor or sales representative immediately.

## Installation

The PCM-23C1CF module with iDoor technology supports the following iAutomation computing platforms:

- UNO-2000 standard mount series
- UNO-1000 DIN rail mount series
- UNO-3000 wallmount series
- 4:3 TPC-xx51T/xx82, TPC-5000 panel PCs
- 16:9 TPC-xx51WP/xx81WP, TPC-5000 panel PCs

\*Note: An additional SATA cable may be required to install the PCM-23C1CF module on a TPC system.

## Documentation/Software Support Guide

Advantech's PCM-23C1CF module is a SATAII (3G/s) to CFast interface for storage applications and does not require a driver.

## Notes

For more information about this or other Advantech products, visit our website at

<http://www.advantech.com>

<http://www.advantech.com/eAutomation>

For technical support and service, visit

<http://www.advantech.com.tw/eservice>

This manual is for PCM-23C1CF

Part No: 200323C101

Edition 2

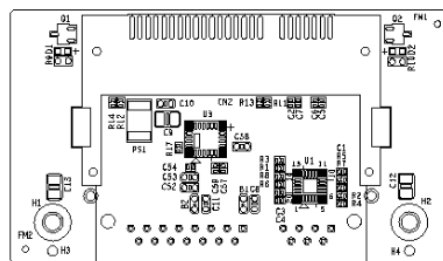
September 2017

## Pin Assignment

The pin assignments for one of the I/O module connectors are shown in the tables and figures below.

### Description of Pin Use — CN2, CFast Connector

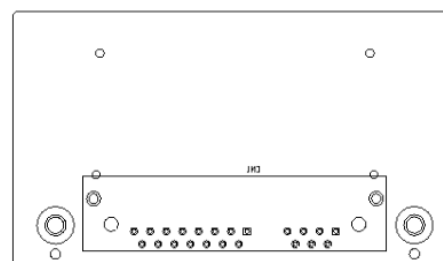
PINS1	GND	PINPC6	NC
PINS2	SATA_TX+	PINPC7	GND
PINS3	SATA_TX-	PINPC8	NC
PINS4	GND	PINPC9	NC
PINS5	SATA_RX-	PINPC10	NC
PINS6	SATA_RX+	PINPC11	NC
PINS7	GND	PINPC12	NC
PINPC1	NC	PINPC13	3.3 V
PINPC2	GND	PINPC14	3.3 V
PINPC3	NC	PINPC15	GND
PINPC4	NC	PINPC16	GND
PINPC5	NC	PINPC17	NC



## Pin Assignment — Internal Connection I/O Board CN1 — SATA HDD Cable

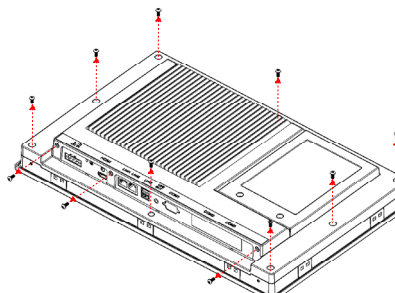
### Description of Pin Use — CN1

PINS1	GND	PINP5	GND
PINS2	SATA_TX+	PINP6	GND
PINS3	SATA_TX-	PINP7	5 V
PINS4	GND	PINP8	5 V
PINS5	SATA_RX-	PINP9	5 V
PINS6	SATA_RX+	PINP10	GND
PINS7	GND	PINP11	NC
PINP1	3.3 V	PINP12	GND
PINP2	3.3 V	PINP13	NC
PINP3	3.3 V	PINP14	NC
PINP4	GND	PINP15	NC

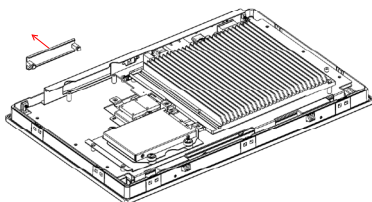


## TPC Panel PC Installation

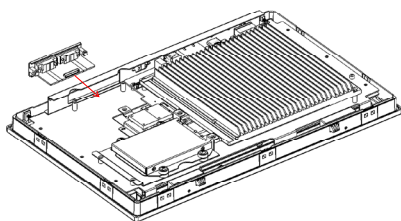
1. Unscrew the backplate screws and remove the backplate.



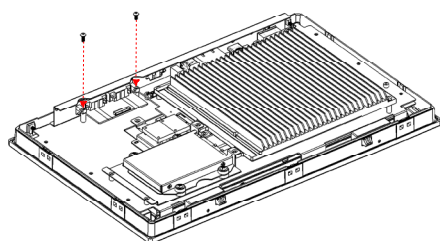
2. Unscrew the blanking plate screws and remove the blanking plate.



3. Insert the PCM-23C1CF module through the blanking plate slot.



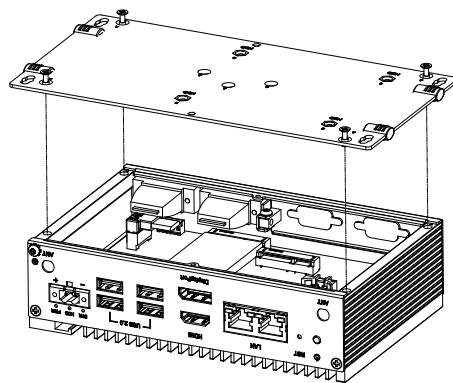
4. Secure the PCM-23C1CF module using the screws removed from the blanking plate.



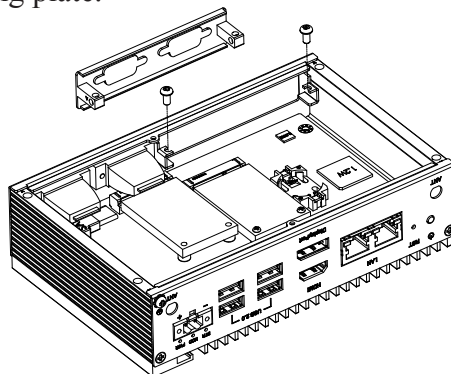
5. Connect the PCM-23C1CF module to the SATA connector on the motherboard using a SATA cable.

## UNO Embedded Computer Installation

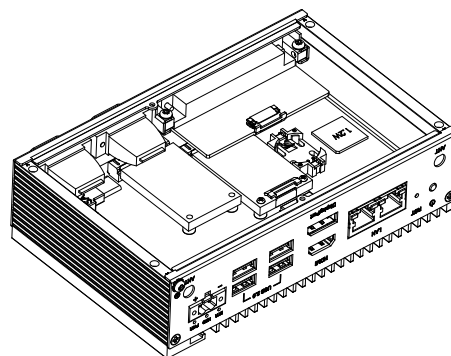
1. Unscrew the base plate screws and remove the base plate.



2. Unscrew the blanking plate screws to remove the blanking plate.



3. Insert the PCM-23C1CF module through the blanking plate hole.



4. Secure the PCM-23C1CF module using the screws removed from the blanking plate.

5. Connect the PCM-23C1CF module to the SATA connector using a SATA cable.